



Conservation
Resource Alliance

Telephone: 231-946-6817
www.rivercare.org
Email: info@rivercare.org



Maple River - Ely Bridge Road Timber Bridge

August 2012 to October 2014

The Maple River is a high-quality, predominantly cold-water stream that flows roughly 23 miles and drains an area of approximately 148,000 acres before flowing into Burt Lake and into the Cheboygan River watershed. The West Branch of the Maple is known to support the best trout fishery and coldest water within the watershed.

The Ely Bridge Road stream crossing (site #E-09), consisted of twin six foot culverts that were critically failing to the extent that they were blocking fish passage. Erosion from the roadbed and embankments contributed to excessive sand and gravel entering into the river. Also the undersized and failing culverts were causing flooding and consequent warming of upstream waters.

The project involved removing the existing twin culverts and installing a 62ft timber bridge, which allowed for unrestricted passage of stream water and aquatic species. In addition Best Management Practices were conducted such as: fieldstone installation, pavement/curbing, and re-vegetation of surrounding streambanks.

Project Cost: \$382,115

Contributors:

- U.S Fish & Wildlife Service – Fish Passage Program, Partners Program, Great Lakes Fish & Wildlife Restoration Act
- CRA's River Care Program
- Emmet County Road Commission
- Baiardi Family Foundation
- The Harry A. & Margaret D. Towsley Foundation
- Oleson Foundation
- Pat & Gill Clements Foundation
- Petoskey-Harbor Springs Area Community Foundation
- Little Traverse Bay Bands of Odawa Indians

Location:

McKinley & Center Twps.
Sections 30 & 25,
Emmet County, MI
N 45.576454°
W -84.852873°



Best Management Practices:

- Timber bridge installation 26' wide, 62' total length & guardrail
- Fieldstone placement for slope stabilization
- Grading & re-vegetation
- Pavement, curbing, & spillway construction

Project Benefits:

- Restore natural movement of woody debris & sediment upstream
- Halt sedimentation into stream from roadbed
- Reduced flooding potential & annual road maintenance
- Enhanced unrestricted passage for migratory fish & other aquatic & terrestrial species

Partners involved:

Conservation Resource Alliance, Emmet County Road Commission, Michigan Department of Environmental Quality, Michigan Department of Natural Resources – Fisheries Division, U.S Fish & Wildlife Service, Little Traverse Bay Bands of Odawa Indians, Krenn Timber Bridge Inc.

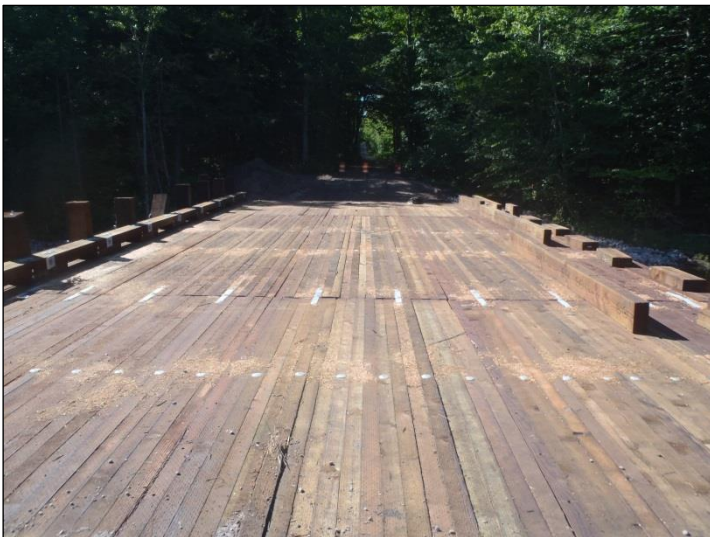


Before - The inadequate twin culverts impeded fish passage and roadbed runoff contributed excessive sediment to the stream



During - The culverts and old roadbed were removed

During - Timber piles and abutments were installed



During - The timber deck prior to paving

After - Guardrails and paving finished off the new bridge. Partners celebrated the completion in September 2014